

6

5

4

3

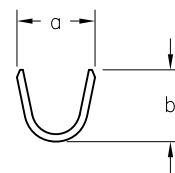
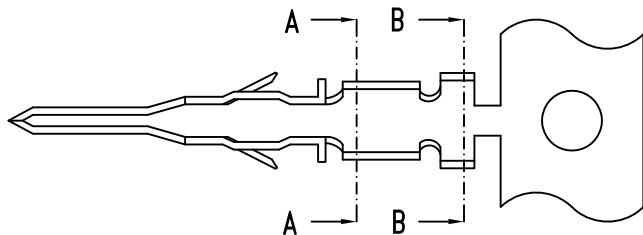
2

1

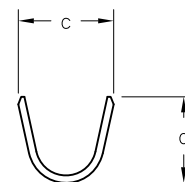
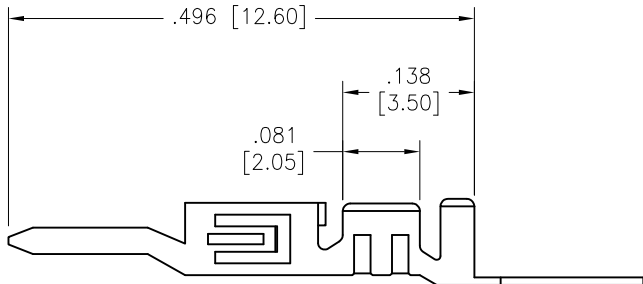
APPROVED: _____

DATE: _____ TITLE: _____

Rev	AWO #	Description	Date	Appr
-		RELEASED	1/21/10	



SECTION A-A



SECTION B-B

SPECIFICATIONS:

Material:

Contact: Phosphor Bronze, 0.2mm Thick

Plating: Tin over copper underplate overall.

Electrical:

Operating voltage: 250 VAC RMS max

Current rating: 20 Awg: 5 Amps max

22 Awg: 5 Amps max

24 Awg: 4 Amps max

26 Awg: 3 Amps max

28 Awg: 2 Amps max

30 Awg: 1 Amp max

Contact resistance: 10 mohms max.

Dielectric withstanding voltage: 1500 VAC for 1 minute

Temperature rise: 30° max.

Mechanical:

Wire size: 20 Awg thru 30 Awg

Environmental:

Lead free, RoHS compliant.

P/N	Wire size	Dim. a	Dim. b	Dim. c	Dim. d
DMU-A-C-M-T-R	#26~#30AWG	.071 [1.80]	.063 [1.60]	.094 [2.40]	.075 [1.90]
DMU-B-C-M-T-R	#20~#24AWG	.083 [2.10]	.083 [2.10]	.106 [2.70]	.094 [2.40]

UNLESS OTHERWISE SPECIFIED
ALL DIMENSIONS ARE INCHES [MM]
TOLERANCES: EXCEPT AS NOTED
INCHES HOLES
.X ± .10 ØX ± .10
.XX ± .020 ØXX ± .015
.XXX ± .015 ØXXX ± .010

ADAM
TECH
INTERCONNECTS

909 Rahway Avenue,
Union, NJ 07083
Phone: 908-687-5000
Fax: 908-687-5710

APPROVALS		DATE
DRAWN	DY	1/21/10
CHECKED		
APPROVED		

TITLE .118" [3.0mm] CRIMP TERMINAL, TIN PLATED, ON REEL		
SIZE X	PART NO. DMU-X-C-M-T-R	REV. A
REF: S00123T	SCALE: NTS	SHEET 1 OF 1



6

5

4

3

2

1